



Erasmus+ Contact Seminar

EASTERN PARTNERSHIP

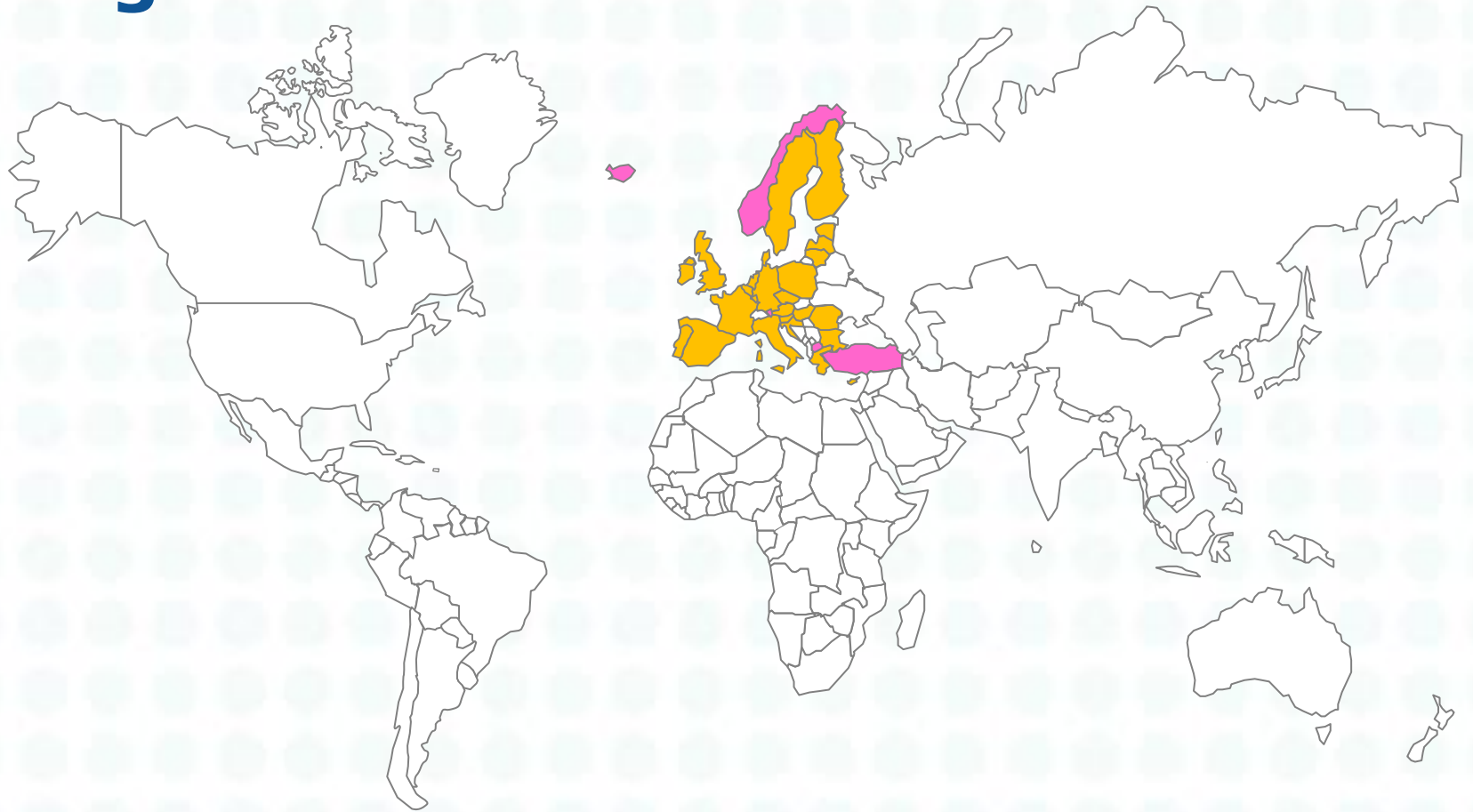
Kyiv, 28-29 November 2016

Workshop B: Tips and Tricks for Project Implementation



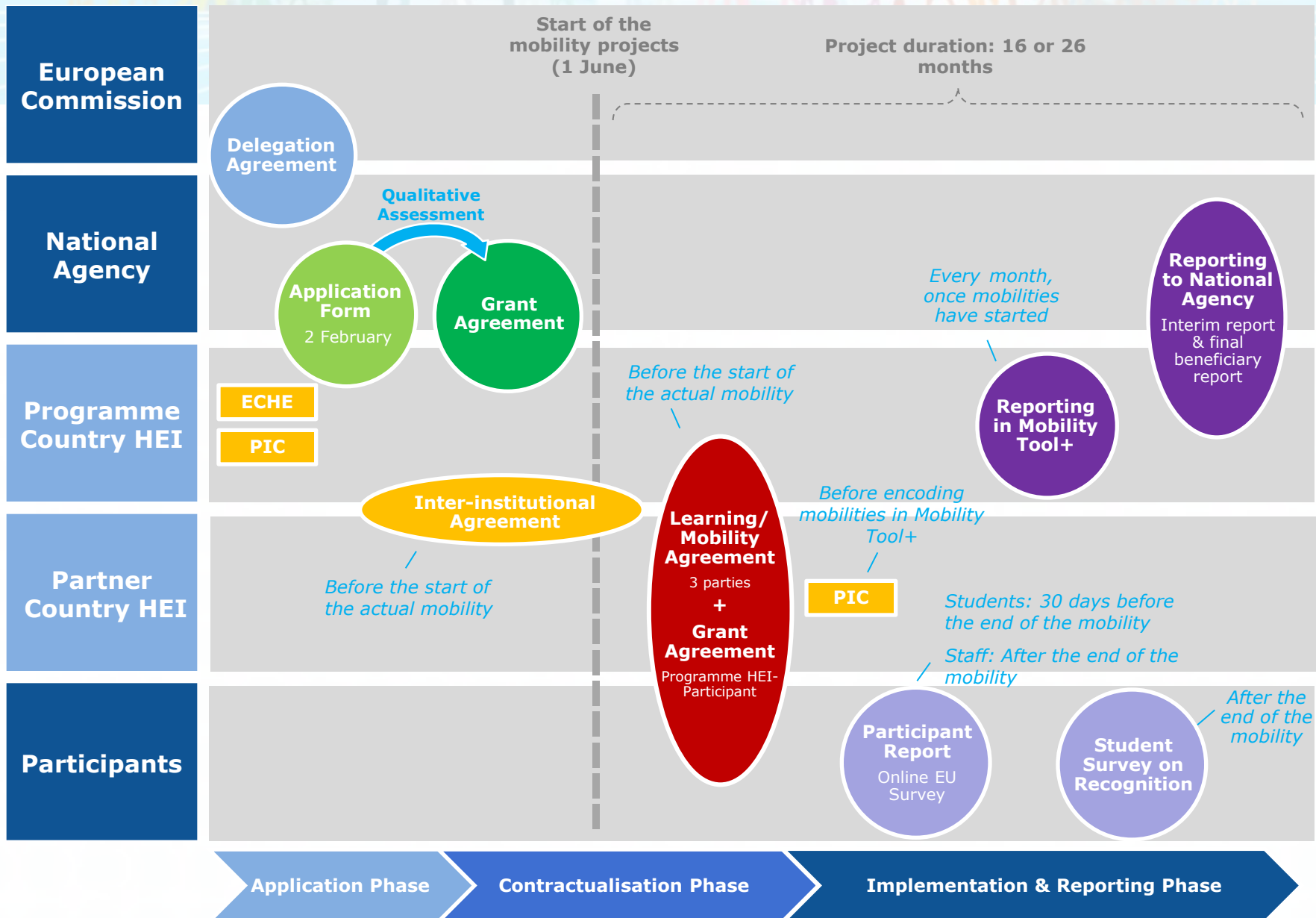


Programme Countries



28 EU Member States + 5

International Credit Mobility Timeline for Contractual Documents





Challenges in project implementation

I. Financial aspects

II. Participant related-problems

III. Partnership-related problems





1) Payments to participants





1) Payments to participants

1. Allocation of grants to participants (IN + OUT)

→ Administratively demanding for Programme HEIs

2. Pre-financing payments VS direct provision

→ Partner HEI students asked to cover costs before receiving grant

→ Programme HEIs propose only direct provision to staff from Partner HEIs

3. Problems with bank accounts and transfers

→ No possibility to open bank account for short stays or without residence permit

→ Bank transfer costs

→ Lengthy transfers

→ Short duration of staff mobility

→ No personal bank accounts in some countries

4. Zero-grant participants & zero-grant extensions

→ Some students not informed before arrival

→ Zero-grant extensions unofficially agreed on with participants before mobility



2) Grant amount





2) Grant amount

1. Insufficient financial support

- Ind. Support too low compared to costs of living in certain countries
- Some countries require higher amount as min. funding for visa requirements
- Additional costs for residence permit, accommodation etc.

2. Variation in grant amount after amendments

- Different Ind. Support for incoming & outgoing participants
- Changes to GA between NA-HEI recalculates grant amount



3) Grant taxation





3) Grant taxation

Problematic tax legislation in some countries

- Estonia: income tax needs to be deducted from staff grants
- Norway: tax authorities can in theory require taxes from incoming PhD candidates and staff
- Slovenia: Grants are regarded as additional funds and taxed
- Finland: Grants of incoming PhDs exceeding 6 months are taxable



4) Budget Absorption





4) Budget Absorption

Difficulties to use all the budget allocated

- Low absorption due to problems encountered during implementation
- Some IIAs do not enter into force due to misunderstandings (e.g. split of OS)
- Some partners want to add clauses to IIA after GA signature
- Delays and cancellations
- Management-heavy and inflexible amendment procedures



I. Financial aspects

II. Participant related-problems

III. Partnership-related problems





1) Selection of participants





1) Selection of participants

- 1. Short timeframe between award notification and deadline for selection**
- 2. Allocation of mobility places per Partner Country VS per HEI**
 - Unclear how many places available per HEI, how selection is made etc.
- 3. Selection decision at Programme HEI VS Partner HEI**
 - Sometimes, direct application to Programme HEI (bypassing Partner HEI)
 - No explanations on final decision
- 4. Different procedures/deadlines for nomination & selection of participants**
 - Lot of preparation and administrative work
- 5. Lack of information**
 - on available opportunities and benefits (i.e. staff mobility)
- 6. Lack of interest, lack of suitable candidates**
 - Fear of going abroad
 - Weak English knowledge



2) Course catalogue





2) Course catalogue

- 1. Differences in study programmes and curriculum descriptions**
- 2. IIAs signed by HEIs, not faculties**
- 3. Late update of course catalogues**
- 4. Unexpected changes at receiving HEI**
- 5. Courses approved at application stage and courses finally realised do not correspond**
- 6. Amendment of Learning Agreement**



3) Visa, insurance, travel support





3) Visa, insurance, travel support

- 1. Unexpected visa costs**
- 2. Visa rejections**
- 3. Visa duration does not correspond to mobility duration**
- 4. Lengthy and costly visa procedures**
- 5. Insufficient Travel Support**
- 6. No additional funds for insurance costs**



4) Recognition





4) Recognition

- 1. Problems with recognition at sending HEI**
- 2. Curricula of Programme HEI and Partner HEIs do not coincide**
- 3. No ECTS in some Partner Countries**
- 4. Recognition for PhD candidates/staff**



5) Complaints





5) Complaints

1. Complaint mechanisms

→ Many students keep silent on problematic or unfair selection/implementation

2. Difficult to ensure fair and transparent selection/recognition



- I. Financial aspects
- II. Participant related-problems
- III. Partnership-related problems**





1) Split of tasks & responsibilities





1) Splits of tasks & responsibilities

1. Amendments after GA & IIA signature

- Different HEIs ask for different changes
- Unclear for Partner HEIs which changes are possible under which conditions

2. Partner Country HEIs not consulted on IIA

- IIA filled by Programme HEI and sent for formal signing without discussion on content

3. Late signature of IIAs

- IIAs often signed right before start of ICM mobilities, leaving little time for discussion of implementation issues or participant selection

4. Lack of knowledge in Partner HEIs

5. No International Relations Office in some Partner Countries

- Difficult communication + uneven split of tasks



2) Organisational Support





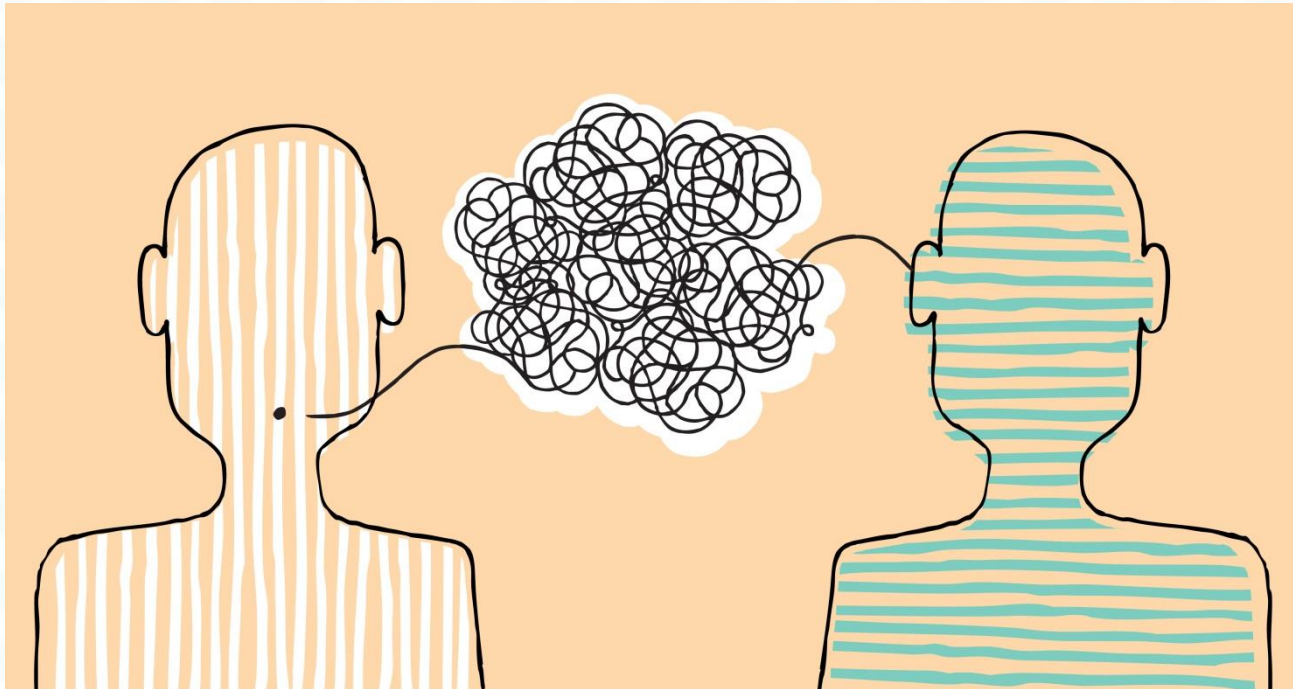
2) Organisational Support

Split of OS between Partner and Programme Country HEIs

- Programme HEIs not willing to share OS with Partner HEIs
- Partner HEIs too demanding
- Programme HEIs unilaterally decide to use OS to fund > mobilities



3) Monitoring, communication, reporting





3) Monitoring, communication, reporting

- 1. Lack of or slow communication between partners**
- 2. Lack of information on Erasmus+ at Partner HEI**
- 3. Lack of instructions from Programme HEI**
- 4. Lack of capacity and experience at Partner HEI**
- 5. Differences between in Programme/Partner Countries**



Other





1) Country-specific challenges





2) Sustainability





Anything else?